

# Dierbergs Town Center

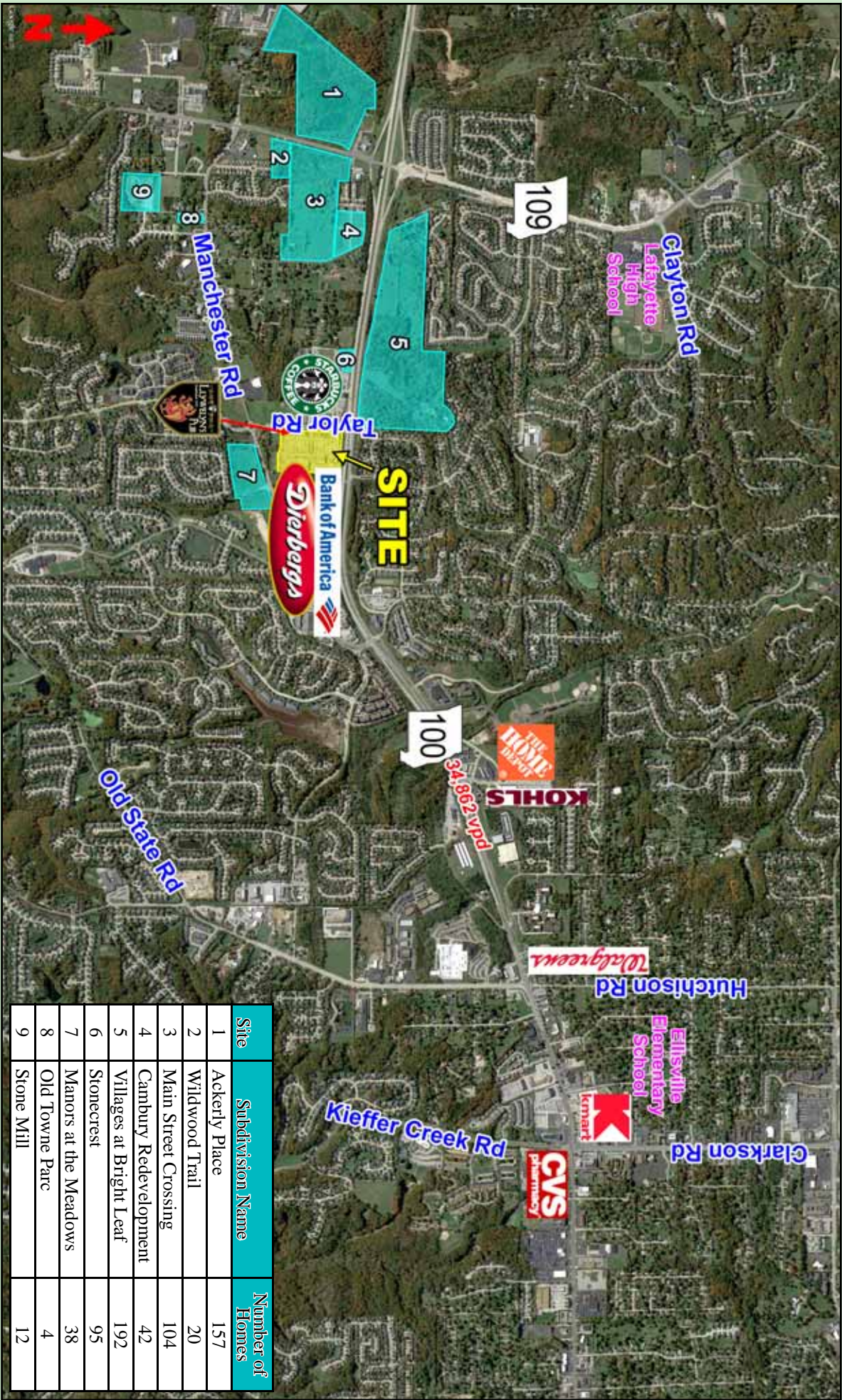


Development

For More Information Contact:



Weller Meyer  
314-492-5007  
wmeyer@caplaco.com  
11850 Studt Avenue  
P.O. Box 419121  
St. Louis, Missouri 63141  
www.caplaco.com



11850 Studt Avenue  
P.O. Box 419121  
St. Louis, Missouri 63141  
Telephone: (314)991-8900  
Fax: (314)991-2474

The information contained herein was obtained from sources deemed reliable, however, Capitol Realty Group makes no guarantees as to the completeness or accuracy thereof. This information is subject to error, omission, change in price or conditions, prior sale or lease, or withdrawal without notice.

Demographics	1-Mile	3-Mile	5-Mile
2024 Estimated Population	11,204	35,509	86,204
2024 Estimated Households	4,268	13,282	32,149
2024 Avg. Household Income	\$152,548	\$169,502	\$170,622





<i><u>Tenant</u></i>	<i><u>Size (sf)</u></i>
1 Massage Envy	2,266
2 Town Center Dental	3,200
3 Subway	1,600
4 Available	1,524
5 Pacific Beach	2,058
6 Land of Smile - Thai	1,200
7 Color Nail	1,200
8 Available	3,583
9 Available	1,599
10 Mathnasium	1,600
11 Magnolia Soap	1,322
Dierbergs	73,947
12 West Oak Cleaners	1,093
13 Great Clips	981
14 Travel Tyme	981
15 Optimal Health Chiropractic	1,200
16 Main Street Creamery	1,600
17 Sunny Street Cafe	4,202
18 Mint & Martini Indian Cuisine	6,547
19 Edward Jones	1,011
20 Anytime Fitness	5,536
21 Micro Meadows	1,590
22 Premier Martial Arts	1,600
23 Happy Go Lucky Outfitters	1,677
24 One Lucky Mutt	1,680
25 El Maguey	4,964
26 Clarkson Eyecare	2,172
27 St. Louis Bread Company	5,639
Bank of America	4,700

