

Lemay Ferry Road at Buckley Road
St. Louis, Missouri



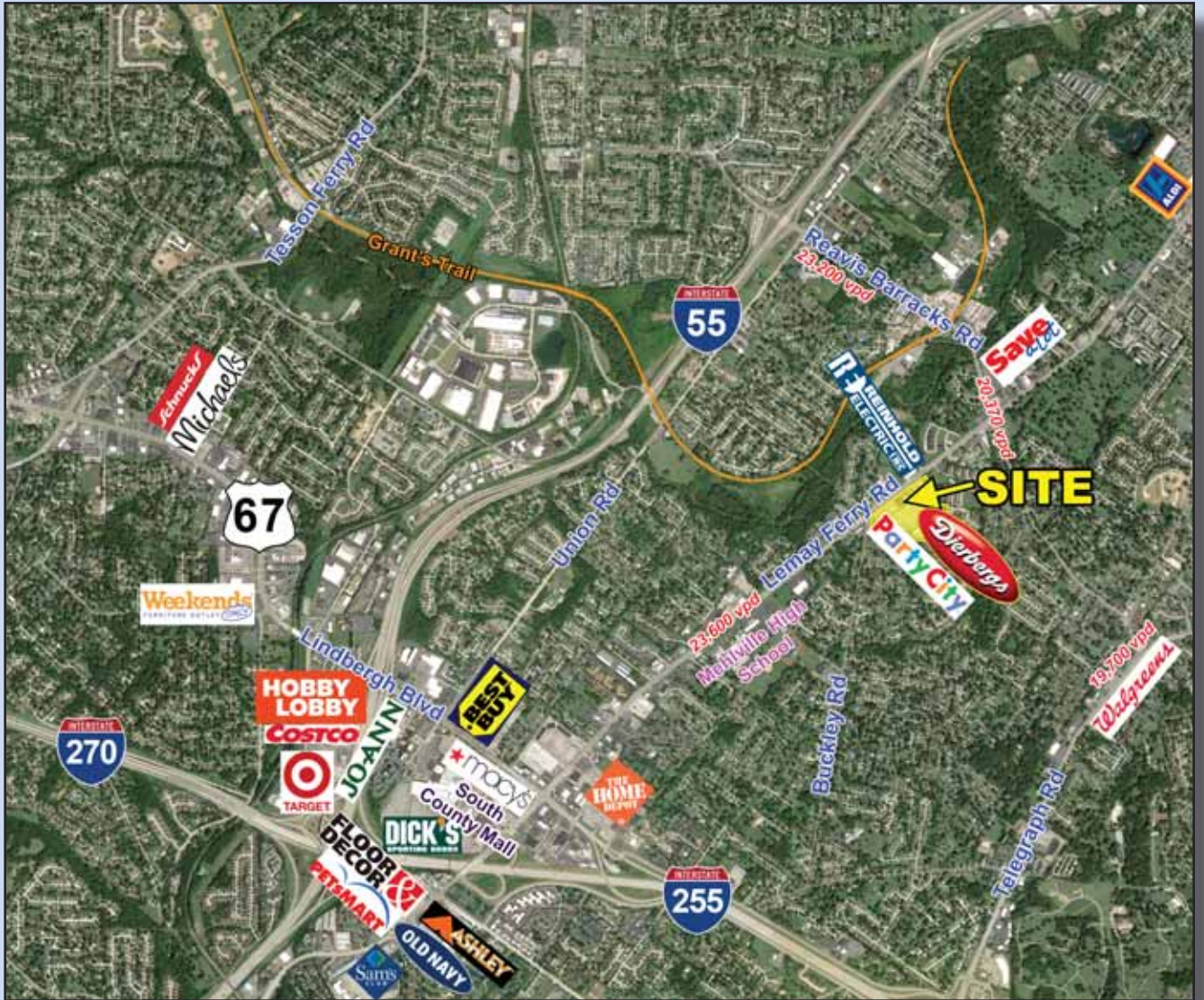
For more information contact:

Weller Meyer

314-492-5007

wmeyer@caplaco.com

www.caplaco.com



Lemay Plaza

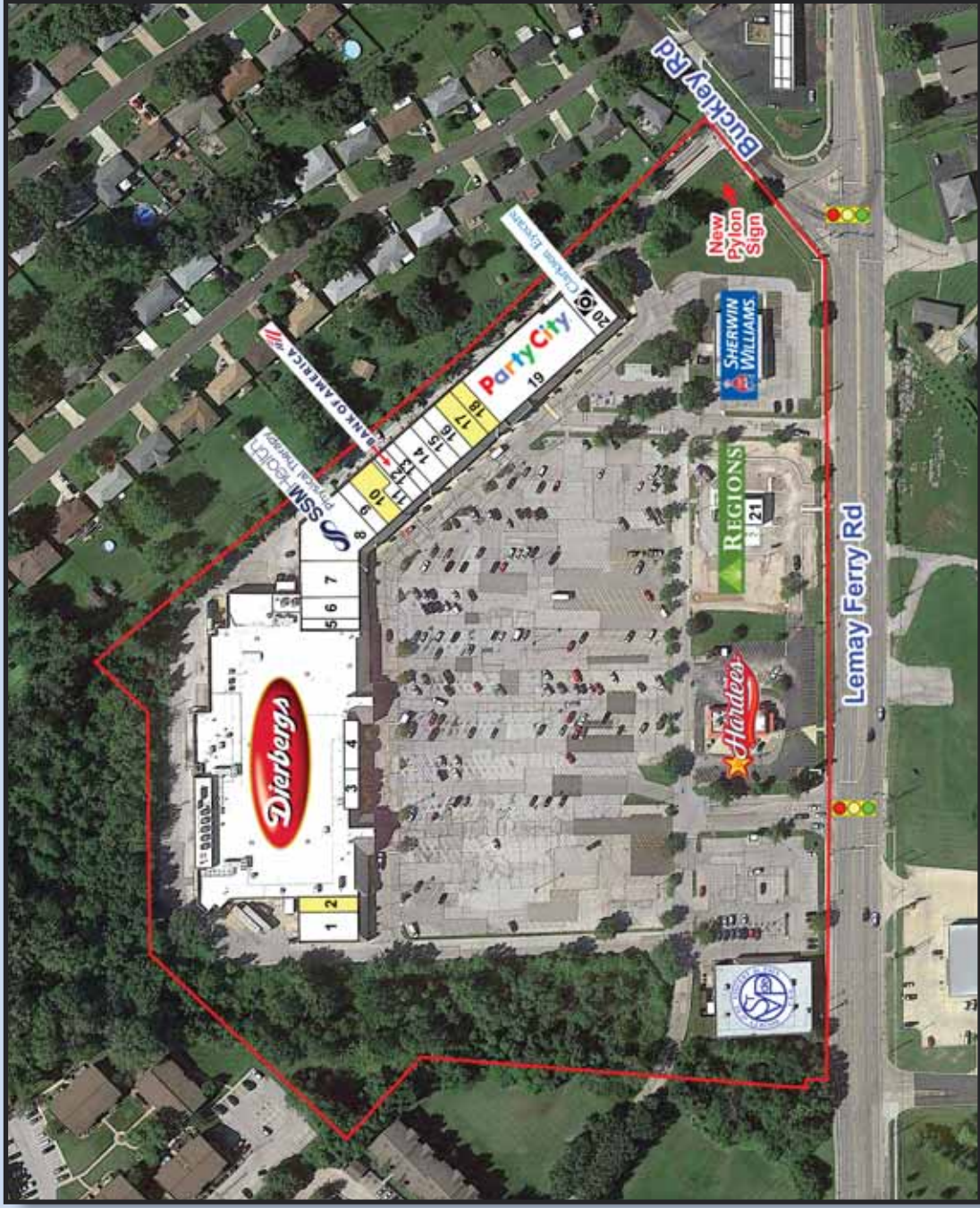
Demographics	1-Mile	3-Mile	5-Mile
2024 Population	12,342	89,068	220,468
2024 Average Household Income	\$69,107	\$83,437	\$92,171

- 1.5 miles from I-270, Lindbergh Blvd., South County Mall, and Best Buy
- Less than 3 miles from Old Navy, PetSmart, & River City Casino.
- Anchored by Dierbergs Market and Party City.

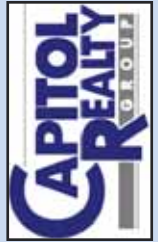


Lemay Plaza

Lemay Ferry Road at Buckley Road
St. Louis, Missouri



<u>Space</u>	<u>Tenant</u>	<u>Size (sf)</u>
1	The Obedient Dog	3,150
2	Available	1,600
3	Labtest Diagnostics	887
4	State Farm	1,046
5	ITech Cell PC	1,215
6	Bates Street Lock & Safe	2,117
7	Urgent Vet	2,768
8	SSM Select Rehab	7,600
9	Pizza Hut	1,600
10	Available	2,450
11	Pro Nails	1,018
12	Bank of America	1,558
13	Clover + Moon Wellness & Beauty Spa	1,200
14	Cairo Market	1,800
15	Beitone Hearing Aid Center	1,241
16	Lemay Garden	1,200
17	Available	2,560
18	Available	1,600
19	Party City	15,000
20	Clarkson Eyecare	2,945
21	Regions Bank	4,795



Updated 02/16/2024

The information contained herein was obtained from sources deemed reliable, however, Capitol Realty Group makes no guarantees as to the completeness or accuracy thereof. This information is subject to error, omission, change in price or conditions, prior sale or lease, or withdrawal without notice.

11850 Studt Avenue • P.O. Box 419121 • St. Louis, Missouri 63141 • Telephone: (314)991-8900 • Fax: (314)991-2474