

Dierbergs Green Mount Crossing



&



Development

For More Information Contact:



Weller Meyer

314-492-5007

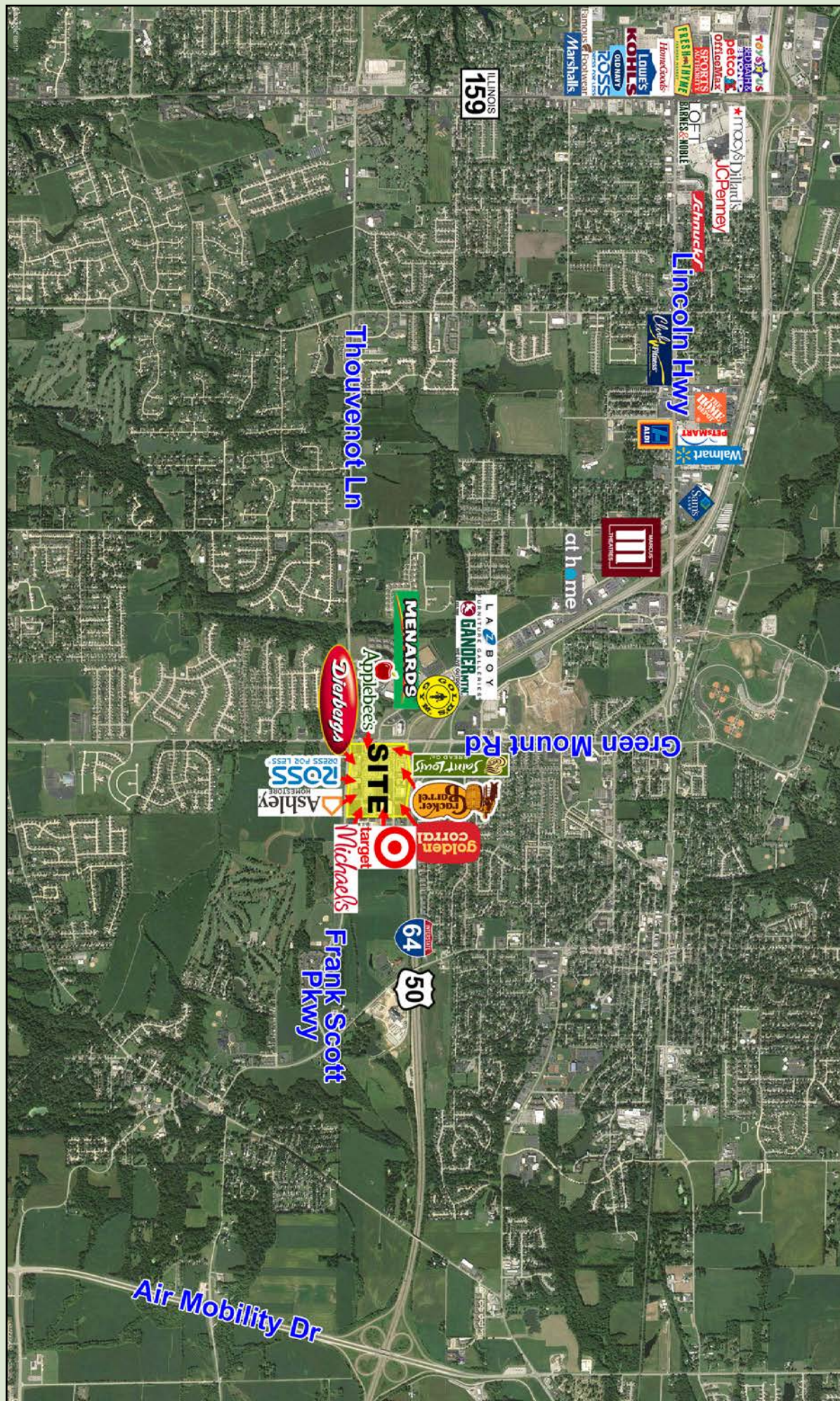
wmeyer@caplaco.com

11850 Studt Avenue

P.O. Box 419121

St. Louis, Missouri 63141

www.caplaco.com

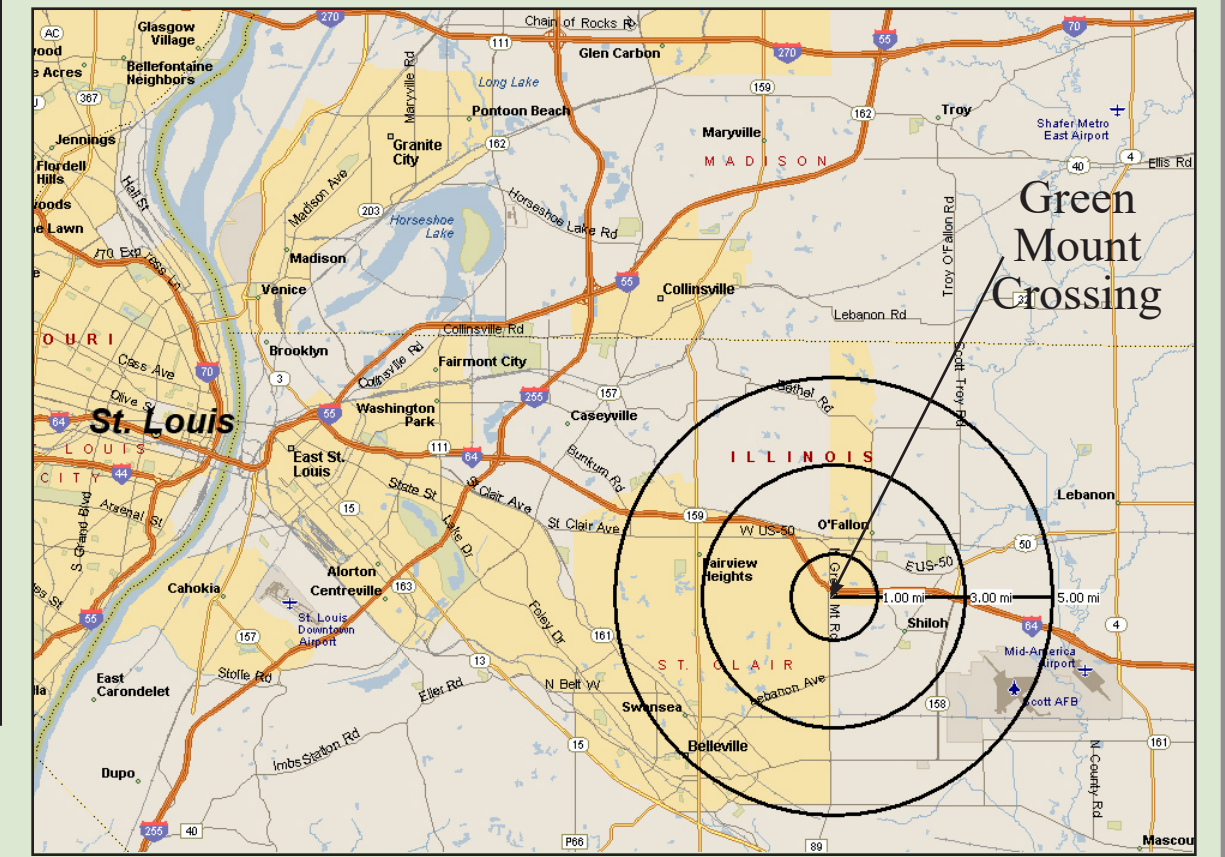


Demographics	3-Mile	5-Mile	10-Mile
2024 Population	46,822	104,765	217,306
2024 Households	19,624	42,588	88,750
2024 Avg. Household Income	\$117,245	\$112,172	\$101,777

2022 Traffic Count
Green Mount Road Near I-64
32,600 AADT



Outlot	Tenant	Size	Building	Tenant	Size
1	Dobbs	1.45 acres	A	Crazy Bowls & Wraps	1,887 sf
2	Applebees	1.08 acres		H & R Block	1,764 sf
3	Commerce Bank	1.07 acres		Edward Jones	896 sf
4	St. Louis Bread Co.	4,990 sf		Look After Hair	1,118 sf
	Beauty Brands	6,000 sf		Apple Cleaners	1,183 sf
5 & 6	Qdoba	2,409 sf	B	Dierbergs	70,447 sf
	Meet Tea & Poke	1,360 sf	C	Spectrum	2,969 sf
	China Hing	1,444 sf		Athletico	2,232 sf
	Coldstone Creamery	1,393 sf		Cecena's Jewelry	1,326 sf
	McAlister's Deli	3,967 sf		G-19 Nails	1,059 sf
	Good Feet Store	1,222 sf		Palm Beach Tan	1,689 sf
	Clarkson Eyecare	2,400 sf	D	Ross Dress for Less	22,030 sf
	Little Caesars	1,600 sf	E-1	Cellular Connection	1,976 sf
	Running Start	2,322 sf		Available	1,839 sf
	The Joint	1,204 sf		Crumbl Cookies	2,400 sf
	Sherwin Williams	3,804 sf		Available	1,766 sf
	Supplement Superstore	1,400 sf		9Round	1,500 sf
	Jersey Mike's Subs	1,673 sf		Orangetheory Fitness	3,500 sf
	Noodles & Company	3,700 sf	E-2	Ashley Furniture	43,112 sf
7	54th Street Grill	1.62 acres	F	The Lash Lounge	1,555 sf
8	Cracker Barrel	2.55 acres		GameStop	1,600 sf
9	Arby's	1.38 acres		Sally Beauty Supply	1,600 sf
10	Freddy's	1.37 acres		Soccer Master	2,000 sf
11	Dollar Tree	8,267 sf		Scrubs & Beyond	2,800 sf
	Famous Footwear	6,000 sf		Bridal Parlour	1,400 sf
12 & 14	Golden Corral	2.66 acres		Hallmark	5,000 sf
			G	Michaels	21,324 sf
			J	Target	125,454 sf



The information contained herein was obtained from sources deemed reliable, however, Capitol Realty Group makes no guarantees as to the completeness or accuracy thereof. This information is subject to error, omission, change in price or conditions, prior sale or lease, or withdrawal without notice.

11850 Studt Avenue • P.O. Box 419121 • St. Louis, Missouri 63141
 Telephone: (314)991-8900 • Fax: (314)991-2474

10/16/2024