

# Dierbergs Wentzville Crossing



*Development*

*For More Information Contact:*



**Weller Meyer**

314-492-5007

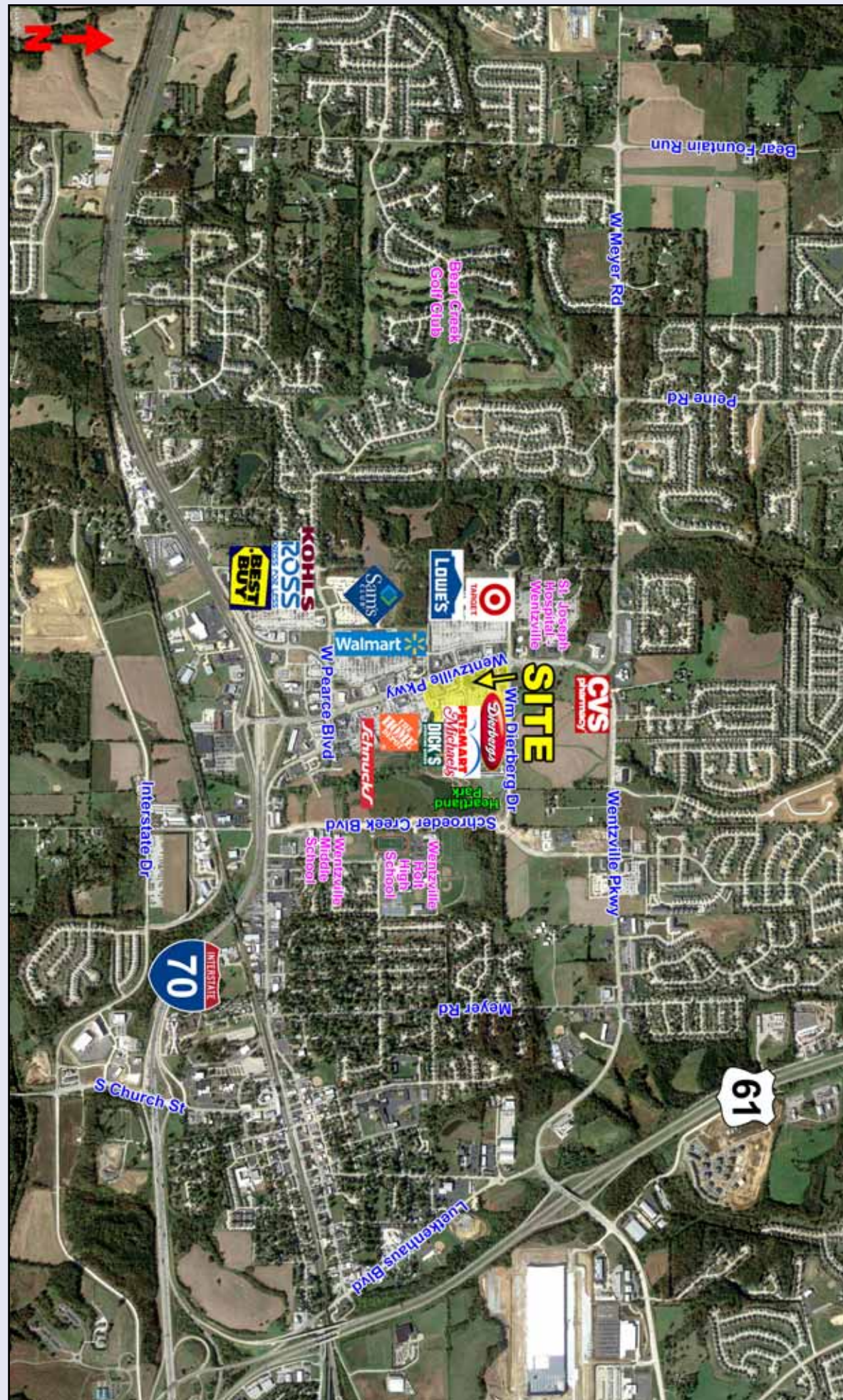
wmeyer@caplaco.com

11850 Studt Avenue

P.O. Box 419121

St. Louis, Missouri 63141

[www.caplaco.com](http://www.caplaco.com)

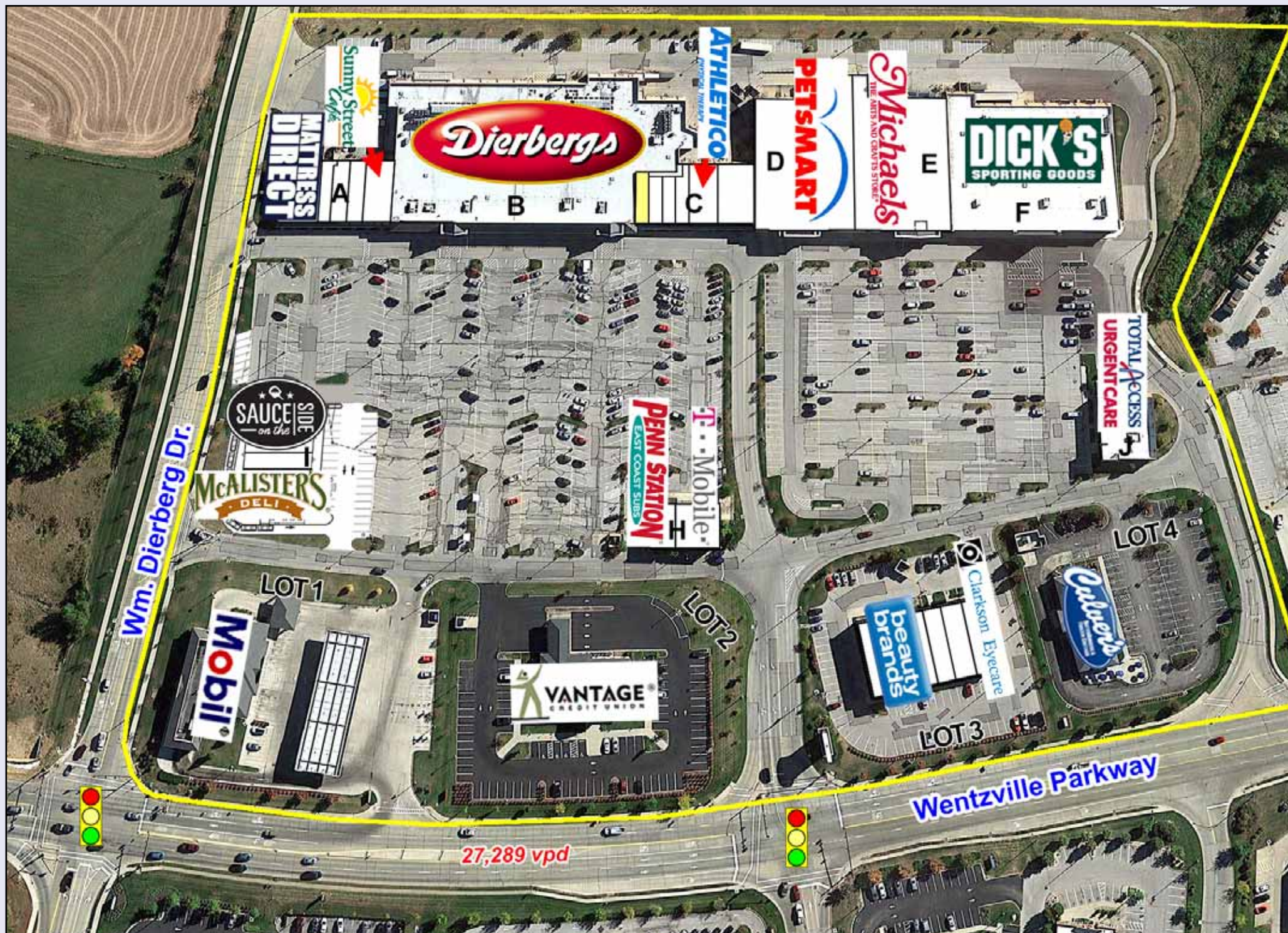


11850 Studt Avenue  
P.O. Box 419121  
St. Louis, Missouri 63141  
Telephone: (314)991-8900  
Fax: (314)991-2474

The information contained herein was obtained from sources deemed reliable, however, Capitol Realty Group makes no guarantees as to the completeness or accuracy thereof. This information is subject to error, omission, change in price or conditions, prior sale or lease, or withdrawal without notice.

	1-Mile	3-Mile	5-Mile
<b>Demographics</b>			
<b>2021 Population</b>	5,251	38,222	57,316
<b>2021 Households</b>	1,866	13,219	20,348
<b>2021 Avg. Household Income</b>	\$105,075	\$114,407	\$116,444





<b>Bldg.</b>	<b>Tenant</b>	<b>Sq. Ft.</b>
A	Mattress Direct	4,000
	Fantastic Sams	1,227
	Investors Title	1,538
	Victorian Nails	1,600
	Sunny Street Cafe'	2,838
	Dierbergs	66,756
B	<b>Available</b>	<b>1,076</b>
	Edward Jones	1,160
	CPR	956
	Southwest Hearing	1,282
	Pro Rehab	2,885
	Dr. Kraner, DDS	3,541
D	Petsmart	22,743
E	Michaels	21,683
F	Dick's Sporting Goods	35,116
H	Penn Station	1,524
	T-Mobile	2,498
I	Sauce on the Side	2,895
	Profile by Sanford	1,605
	McAlister's Deli	4,189
	Total Access Urgent Care	4,997

<b>Outlot</b>	<b>Tenant</b>	<b>Size</b>
Lot 1	Mobil	2.01 ac
Lot 2	Vantage Credit Union	1.98 ac
Lot 3	Beauty Brands	5,982 sf
	Supplement Superstore	1,597 sf
	Club Pilates	2,015 sf
	Clarkson Eyecare	2,402 sf
Lot 4	Culver's	1.33 ac

Updated 11/18/2021

