

Dierbergs Wentzville Crossing



Development

For More Information Contact:



Weller Meyer

314-492-5007

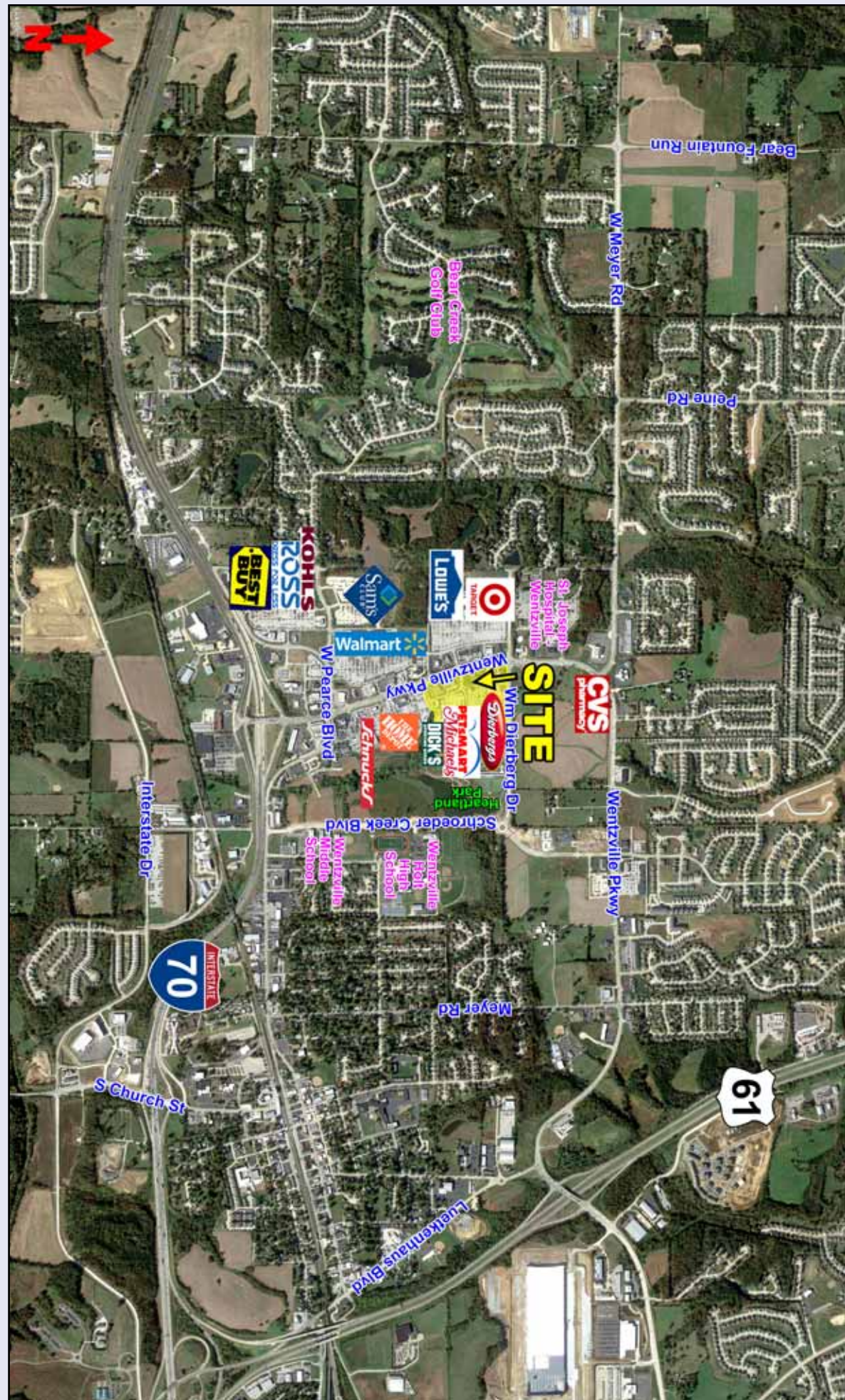
wmeyer@caplaco.com

11850 Studt Avenue

P.O. Box 419121

St. Louis, Missouri 63141

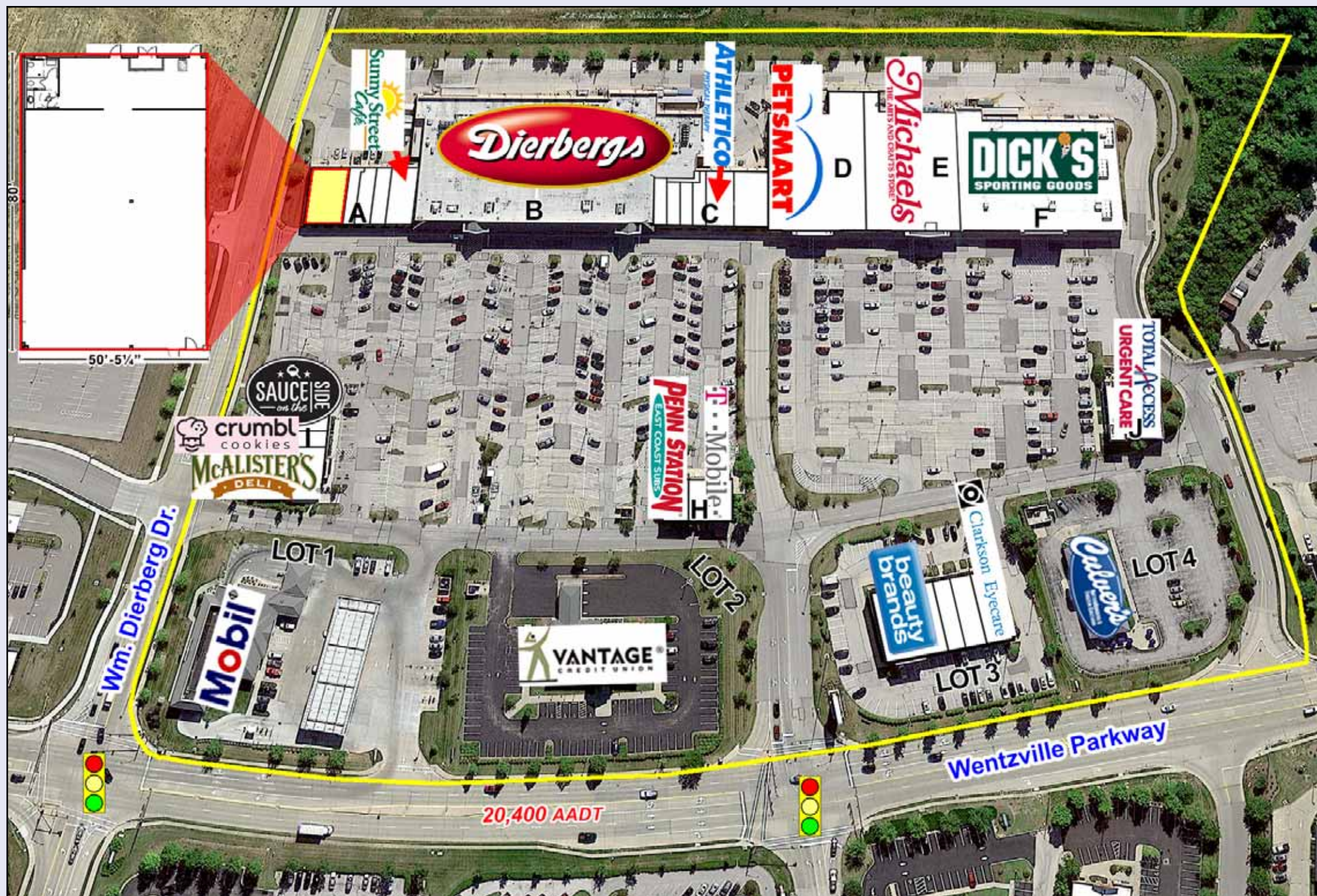
www.caplaco.com



11850 Studt Avenue
P.O. Box 419121
St. Louis, Missouri 63141
Telephone: (314)991-8900
Fax: (314)991-2474

The information contained herein was obtained from sources deemed reliable, however, Capitol Realty Group makes no guarantees as to the completeness or accuracy thereof. This information is subject to error, omission, change in price or conditions, prior sale or lease, or withdrawal without notice.

	1-Mile	3-Mile	5-Mile
Demographics			
2024 Population	5,399	43,918	65,029
2024 Households	1,942	15,085	22,648
2024 Avg. Household Income	\$126,891	\$125,512	\$129,062



Bldg.	Tenant	Sq. Ft.
A	Available	4,000
	Fantastic Sams	1,227
	Investors Title	1,538
	Victorian Nails	1,600
	Sunny Street Cafe'	2,838
B	Dierbergs	66,756
C	Apple Cleaners	1,076
	Edward Jones	1,160
	CPR	956
	Southwest Hearing	1,282
	Pro Rehab	2,885
	Dr. Kraner, DDS	3,541
D	Petsmart	22,743
E	Michaels	21,683
F	Dick's Sporting Goods	35,116
H	Penn Station	1,524
	T-Mobile	2,498
I	Sauce on the Side	2,895
	Crumbl Cookies	1,605
	McAlister's Deli	4,189
J	Total Access Urgent Care	4,997

Outlot	Tenant	Size
Lot 1	Mobil	2.01 ac
Lot 2	Vantage Credit Union	1.98 ac
Lot 3	Beauty Brands	5,982 sf
	Supplement Superstore	1,597 sf
	Club Pilates	2,015 sf
	Clarkson Eyecare	2,402 sf
Lot 4	Culver's	1.33 ac

Updated 02/19/2024

